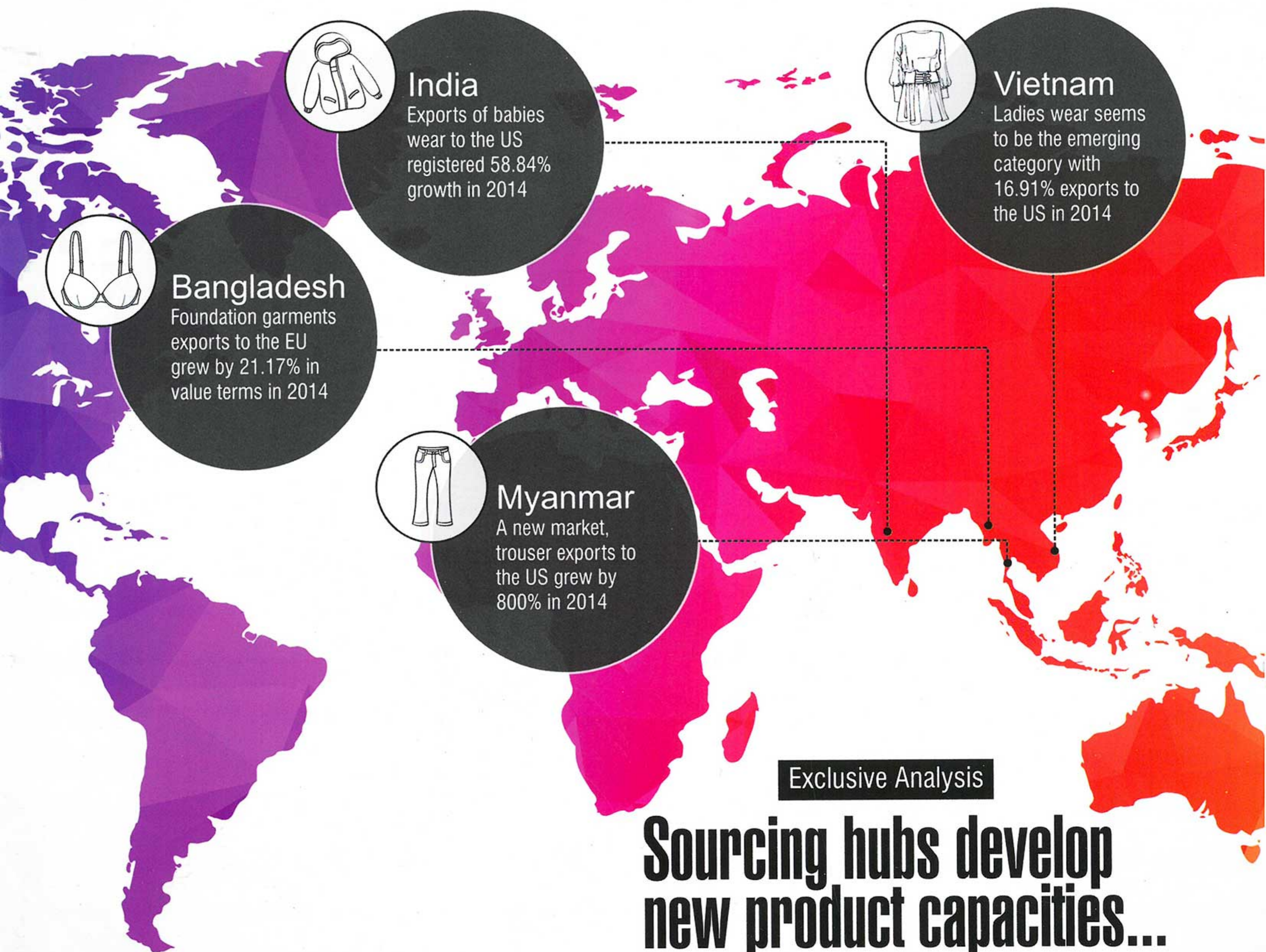


stitchworld net StitchWorld

Technology and Management in Sewn Product Industry



Exclusive Analysis

Sourcing hubs develop new product capacities...

What does this mean for machinery manufacturers?

28

Industrial Engineering in Apparel Manufacturing – IX: Minimizing Start-up Losses

32

Realization of Quality Management System in Textile and Apparel Manufacturing – I: TQM Implementation

42

Key takeaways for Asian manufacturers at Texprocess 2015



V300

AUTOMATIC WAISTBAND UNIT

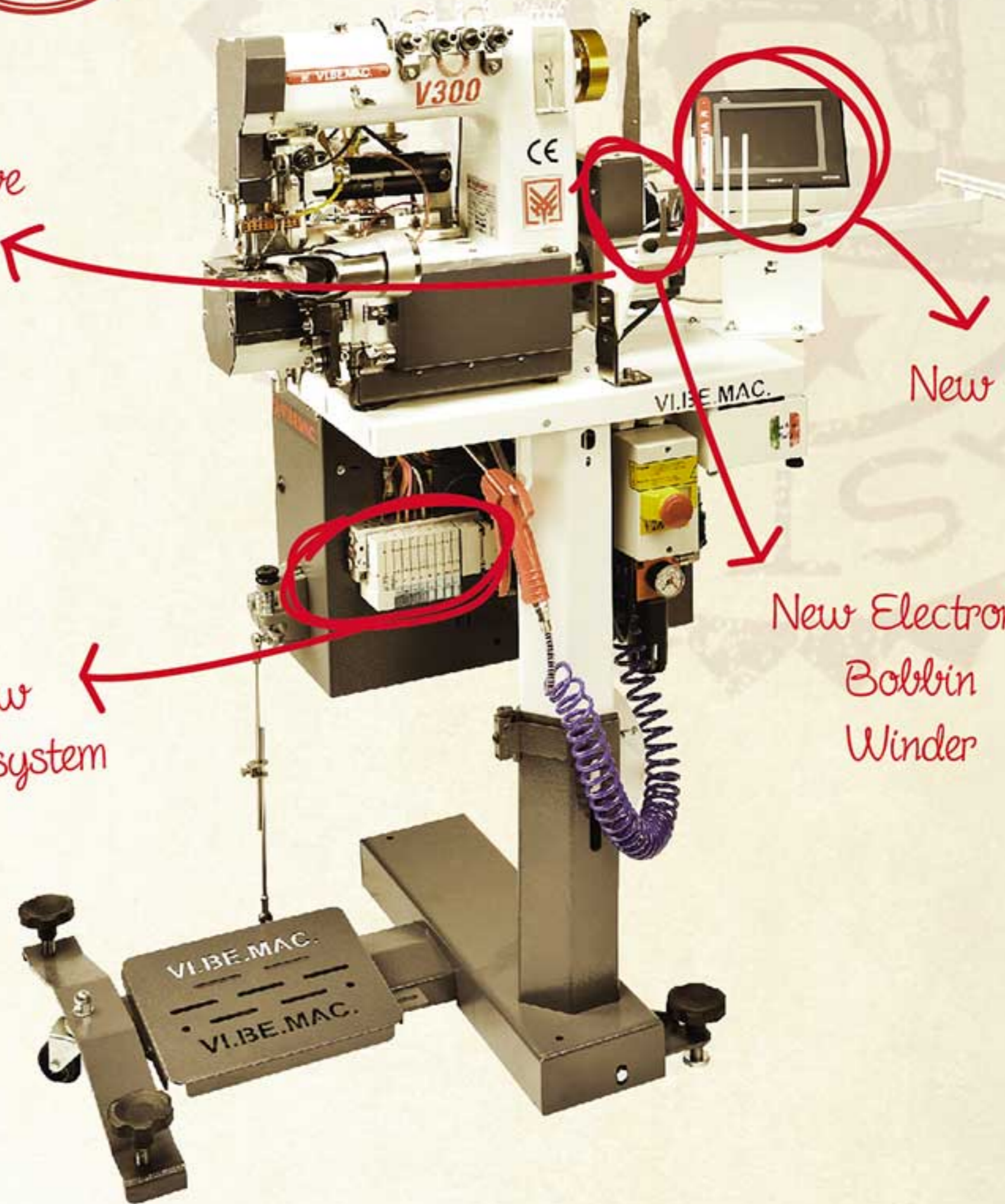
- ✓ **Max Sewing Speed:** chain stitch settings 4200 rpm, lock stitch setting 3200 rpm
- ✓ **Stitching Length:** from 0,9 to 8 mm
- ✓ **Standard Needle Gauges:**
 FLX: 3/4" - 1" - 1" 1/4 - 1" 1/2 - 1" 3/4 - 2" - 2" 1/4
 CS: 3/4" - 1" - 1" 1/4 - 1" 1/2 - 1" 3/4 - 2" - 2" 1/4
 LS: 1" - 1" 1/4 - 1" 1/2 - 1" 3/4 - 2"
- ✓ **Optional Needle Gauges:** (for all three models)
 7/8" - 1" 1/8 - 1" 3/8 - 1" 5/8 - 1" 7/8

Direct Drive Motor

New valve system

New Electronic Bobbin Winder

New Panel



LAST VI.BE.MAC. RELEASE...
...above the standard performances !!!



UNIQUE WORLDWIDE !!

same machine:
lock stitch + lock stitch
chain stitch + chain stitch
lock stitch + chain stitch
MIXED as desired
(FLX version)



INTELLIGENT LUBRICATION SYSTEM to avoid oil wasting



INNOVATIVE PHOTOCCELL
detects any kind of fabric

stay connected



VI.BE.MAC. spa: Via Monte Pastello 7/i - 37057 S. Giovanni Lupatoto (VR) Italy - tel. +39 045 8778151/52 fax. +39 045 8779024
vibemac@vibemac.com - www.vibemac.com

VBM Bangladesh: house no #76, Gawsul Azam Avenue, Sector #13, Uttara, 1230 Dhaka, Bangladesh - office.m@vbm-bd.com

Vibemac's dealer in India E. H. TUREL: www.turelgroup.com - sales.mumbai@turelgroup.com