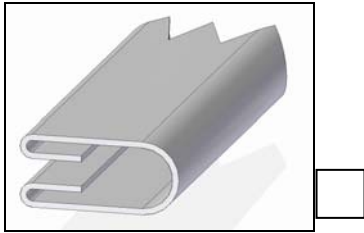


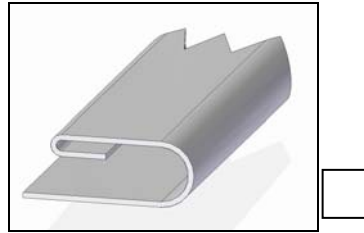
# Application form for folders

STRAIGHT SINGLE  
WAISTBAND FOLDER



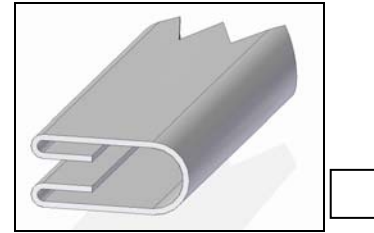
BA01\_\_

STRAIGHT SINGLE  
WAISTBAND FOLDER  
LOWER OPENED



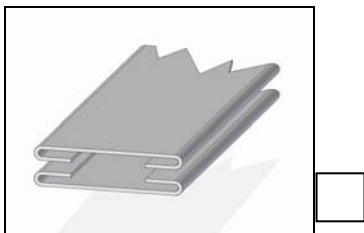
BA01\_\_SPS

STRAIGHT SINGLE  
WAISTBAND FOLDER  
LEWIS TYPE



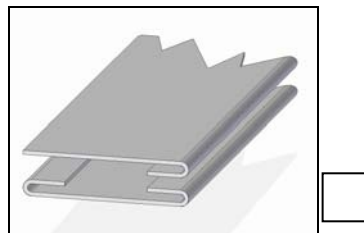
LW01\_\_

DOUBLE STRAIGHT  
WAISTBAND FOLDER



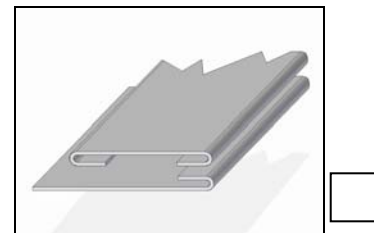
BD03\_\_

DOUBLE STRAIGHT  
WAISTBAND FOLDER  
TOP OPENED



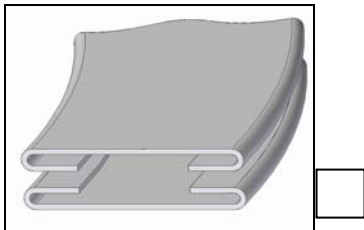
BP01\_\_

DOUBLE STRAIGHT  
WAISTBAND FOLDER  
LOWER OPENED



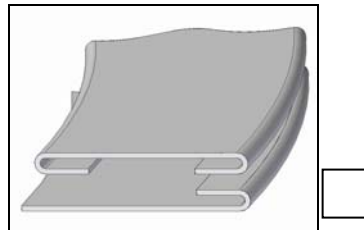
BD03SP

DOUBLE CURVED  
WAISTBAND FOLDER



BDFC01\_\_

DOUBLE CURVED  
WAISTBAND FOLDER  
LOWER OPENED



BDFC01SP

FABRIC :  L  M  H  HS

EXIT :  30  36  43  50  55  60

NEEDLE GAUGE:  1"(25,4mm)  1"1/4(31,75mm)  1"3/8 (35mm)  1"1/2(38,10mm)

1"3/4(44,50mm)  2"(50,80mm)  2"1/4(57,20mm)

FABRIC INPUT MEASURE : \_\_\_\_\_

FABRIC INPUT MEASURE has to be inserted by the client

For any other style that is not in this list, or for any other request, feel free to contact us:

telefono: +39-045-8778151 / 52 fax: +39-045-8779024

e-mail: [spareparts@vibemac.com](mailto:spareparts@vibemac.com) or [yibemac@vibemac.com](mailto:yibemac@vibemac.com)